

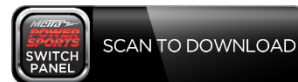


2nd GEN PowerSports 6 zone control and dual control switch

Visit metrapowersports.com to view the available installation parts and ATV/UTV accessories.

KIT INFORMATION

- Two control options
- Independently fused channels
- 6-button switch
- App controlled
- 2 strobe option
- Low EMI design



WHAT'S IN THE BOX

- 6-button switch
- Switch adaptor for Polaris®
- Remote mounted control box

Having difficulties?

Contact our tech support line at:
Techsupport@metra-autosound.com

Or via phone at:
368.257.1187

TECH SUPPORT HOURS (EST)

Monday-Friday: 9:00AM - 7:00PM
Saturday: 10:00AM - 5:00PM
Sunday: 10:00AM - 4:00PM

Closed for most US Federal Holidays

Power Connections:

GND - Connect the ground lug to chassis ground.

VCC - Connect the 12 Volt lug to the vehicle battery. Recommended 60 amp in line fuse.

REM IN - Connect the REM IN wire to ignition, battery or some switched 12V DC wire to control on/off

Accessory Connections:

Channels 1 and 2 can handle 200W each

Channels 3 and 4 can handle 100W each

Channels 5 and 6 can handle 50W each

The control box requires that the accessories + and - wires be connected to the control box.

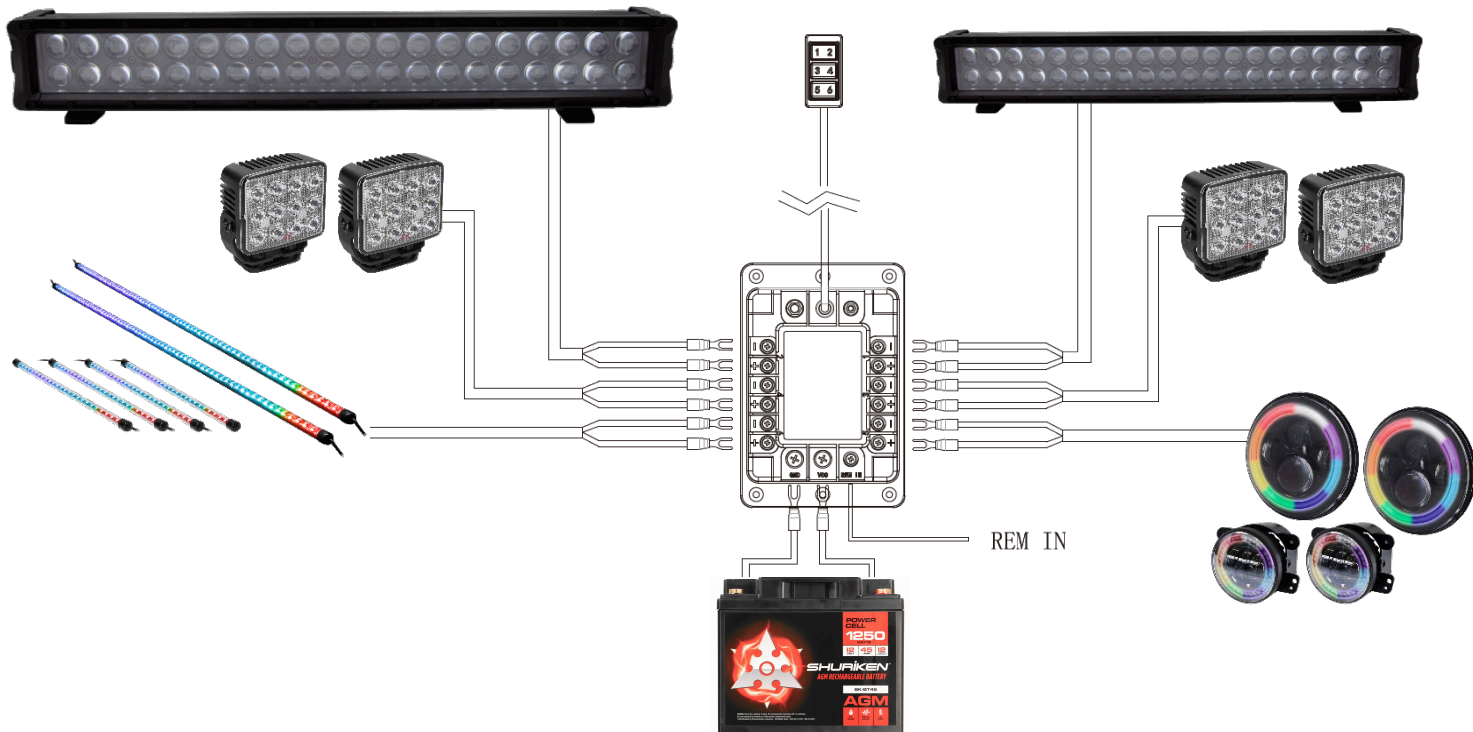
Snap-in button controller:

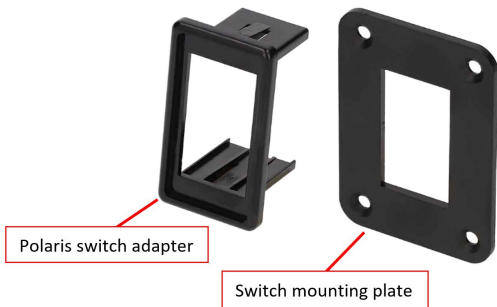
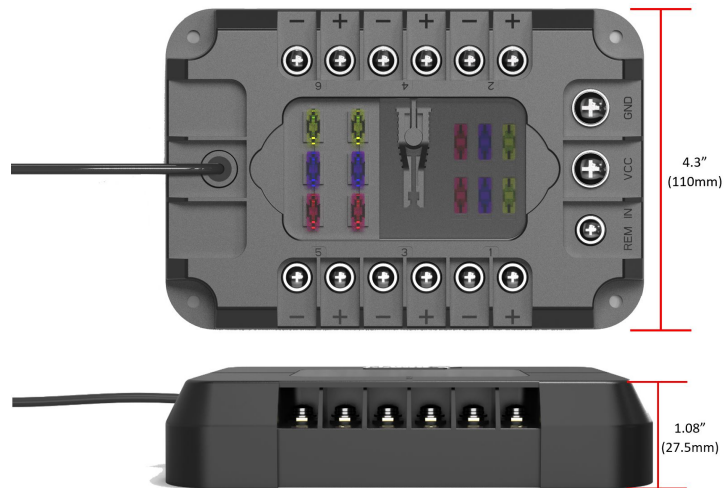
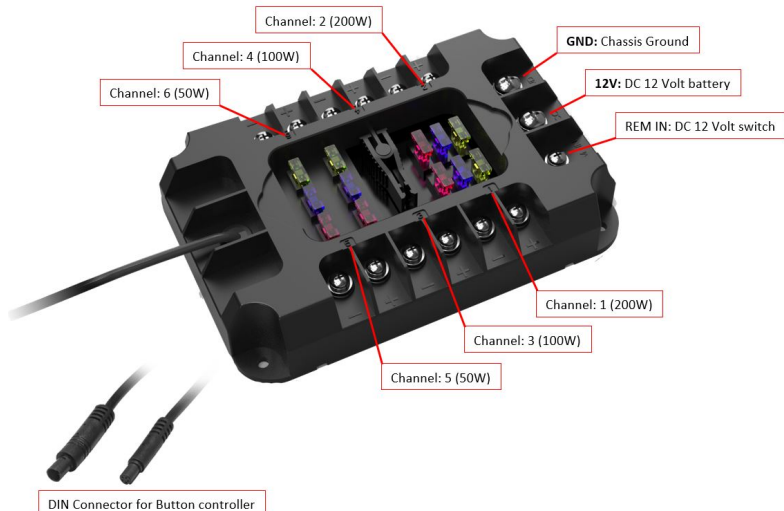
Connect the snap-in button controller to the switch box waterproof DIN connector.

It fits industry standard 1.45 x 0.83" cutout.

If installing into a Polaris® vehicle use the provided Polaris® switch adapter.

The control box requires that the accessories + and - wires be connected to the control box.





Remote Functionality: When controller is paired to a smart device, the number 1 will light up blue. When a zone is activated it will light red.

Brightness control: To cycle through the brightness, press and hold the desired button.



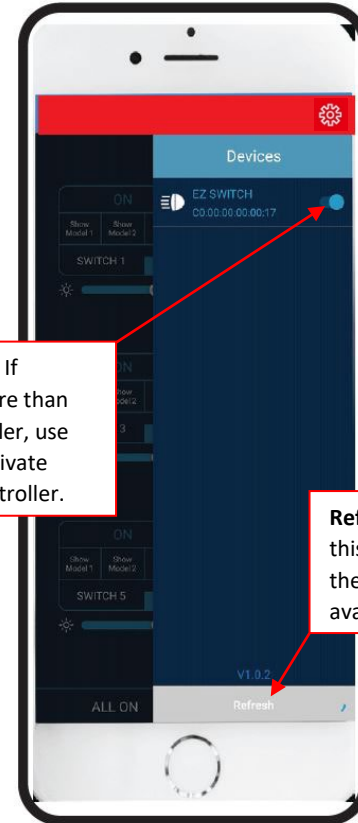
The app is available in both Google Play store and Apple Store. Scan the QR code to download the MPS SWITCH app.



MPS-SW6 APP Setup and Controls

Open the APP, select the gear icon in the top right corner. The MPS-SW6 will search for all available MPS-SW6 Switch boxes nearby. Choose the controller from the available list. Once connected its status will be synced with the APP automatically. The SW6 APP will reconnect automatically when device is present.

MPS-SW6 APP can only connect and sync with one switch box at a time.



Device list: If running more than one controller, use slider to activate desired controller.

Refresh: Tapping this area will make the app look for available controllers.

Main screen for Metra Powersports SW6 app and used to control turn-on, turn off, brightness and flashing pattern for each LED lights. The ALL ON and ALL OFF buttons give the user the ability to control all 6 Channels at once. To rename the switch positions press and hold the current name for 2 seconds, this will open a screen to change the name.

Strobe effects: Fast strobe [Model 1] and double pulse [Model 2] patterns.

Circuit location: Identifies the connected device, to rename long press wait for box to pop up. Enter desired name.

Independent On/Off Switch: The ability to power the desired switch, separate to other switches.

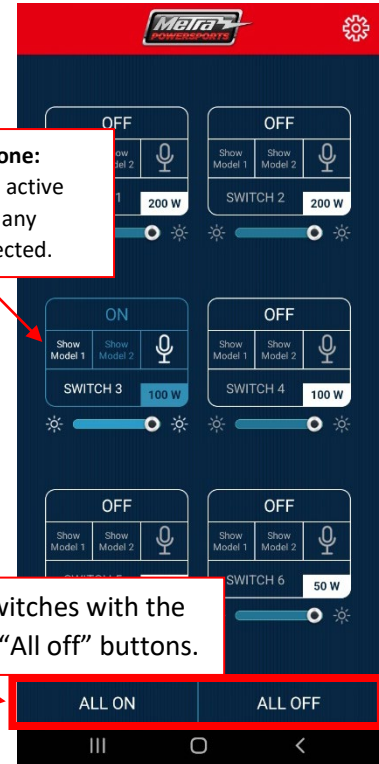
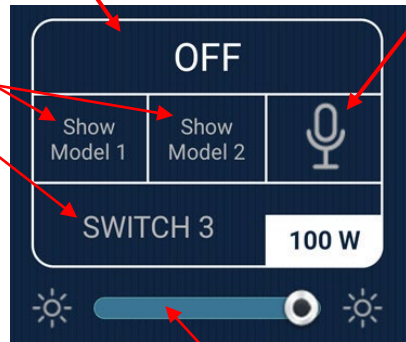
Open MIC: Will flash and pulse lights to the sounds picked up by the device microphone.

Will not work on same device streaming/playing music.

Light blue zone: Indicates an active zone, and if any mode is selected.

Control all switches with the "All on" and "All off" buttons.

Brightness: Slider to control light brightness (output).





Document date of purchase, and place of purchase.

Date: _____

Place of Purchase: _____

Install Notes: _____



Thank you for purchasing from Metra Electronics! We're excited to see your installs, scan the QR to share on our Instagram. If you have any questions, comments, feedback on the product, please contact our tech support email via techsupport@metra-autosound.com.

Don't forget to Visit MetraPowerSports.com to view the available installation parts and accessories.

