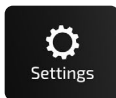
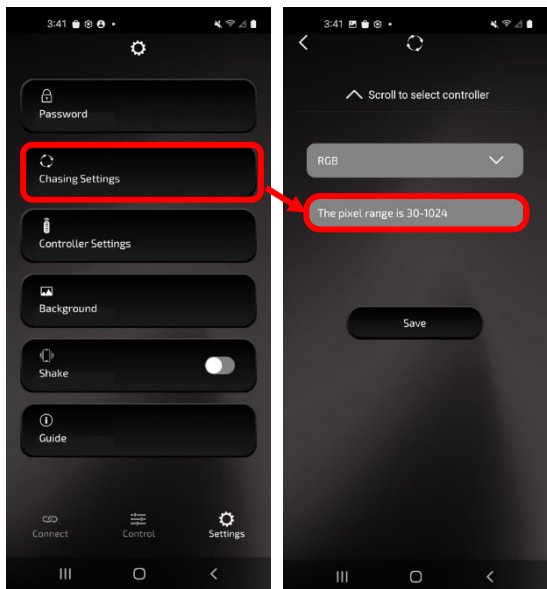


# How to change Pixel Counts



Click Settings > Chase Settings > Scroll to controller > Using chart, set Pixels > Click Save.



Group	Part number	Set Controller Pixel Count To:	Group	Part number	Set Controller Pixel Count To:	
Headlights	JP-707RGBKT	36	5M Strip	HE-CHASE-5M	150	
	JP-708RGBKT	36	Whips	MPS-CHWP-1	43	
	JP-709RGBKT	77	Lightbars	HE-CHASE-B8	30	
	JP-901RGBKT	91		HE-CHASE-B12	30	
		HE-CHASE-B22		30		
Wheel Lights	HE-CHASE-W14	30		HE-CHASE-B32	30	
	HE-CHASE-W155	30	Cube Lights	HE-CHASE-CLKT	30	
	HE-CHASE-W17	30		HE-CHASE-FCLKT	30	
	HE-CHASE-WS	30	Vehicle Kits	BC-CHASE-K1	30	
	HE-CHASE-WL	30		BC-CHASE-K2	30	
		MPS-CHASE-CPY		30		
Underglow	HE-CHASE-UNDGKT	42		BC-CHASE-K3	30	
	MPS-UNDG-KT1	36	Add on	HE-CHASE-T9	30	
Rock Lights	HE-CHASE-R1	+6 Added 30 standalone		HE-CHASE-T12	30	
	HE-CHASE-K4	36		HE-CHASE-T18	30	
	HE-CHASE-K8	72			HE-CHASE-T28	36
	HE-CHASE-EX4	30			HE-CHASE-T48	42
Ambient	HE-AMB-2KT	94		HE-CHASE-R1	+6	
	HE-AMB-2DR	94				
	HE-AMB-CAR	67				
Interior	HE-CHASE-INT	30				
Exterior	HE-CHASE-GRILLE	30				
	HE-CHASE-BED	30				

App Support online



Heise Connect app



Online Support: Scan QR codes