



1. Assemble the wheel ring, at the 11" configuration.



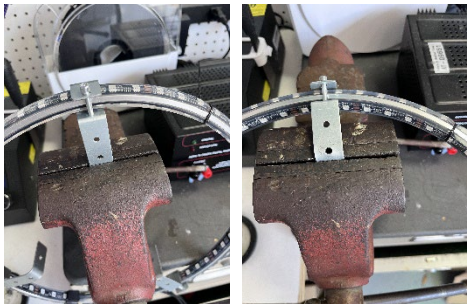
2. Adhere and cut strip lights to length, glue supplied new caps to cut ends of the strip.
3. Connect 3 mounting brackets to the completed wheel light.

To watch video on how to assemble ring, scan QR code.

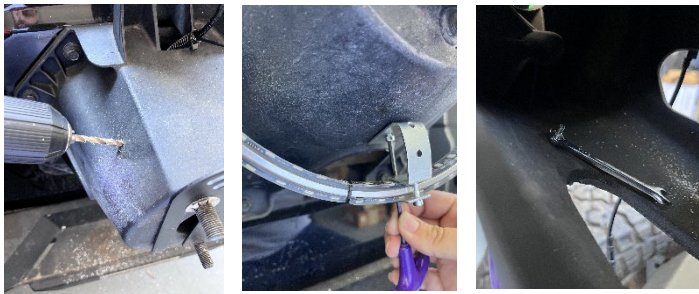


NOTE: This instruction uses a **HE-CHASE-WS/L**, with the ring setup at 11 inches to install on a Jeep JK. It is possible to use 15+ inches, if you customize the brackets for your application.

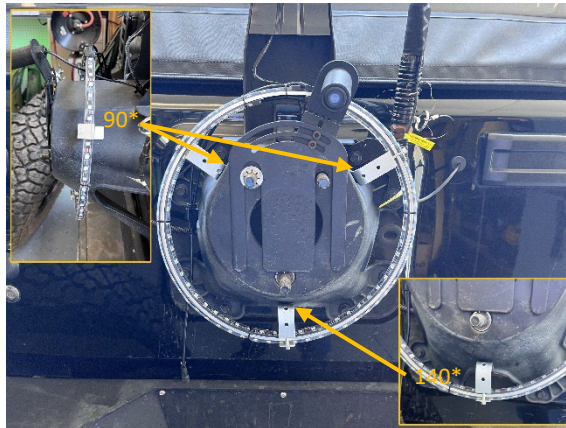
4. Using a bench vice, insert bracket approximately 1.25" into the vice and secure. Bend two brackets to 90°, and one to 140°.



7. Using supplied hardware, secure ring to the tire carrier. Mark and drill the holes into the tire carrier.



6. With the wires in the 12 o'clock position, place the assembled rings on the OE spare tire carrier. Arrange the brackets to the 10, 2 and 6 o'clock position.



5. To complete install, connect controller to ring light and remount spare tire.

NOTE: Be sure to torque the spare tire to OE specs.

