



# HE-WRC

(Wireless Remote Control)



The HE-WRC is a wireless remote control and receiver designed to be used with the HEISE LED light bars and cubes and the HEISE wire harnesses. The HE-WRC offers on/off function and 9 different flash options.

**Below are the functions of the HE-WRC:**

**A** – Turns the light bar/cubes on and off

**B (1 time)** – Flash 3 times quickly then quick pause, flashes 3 times quickly then quick pause, repeats over and over

**B (2 times)** – flashes quickly for 3 seconds then slow flashes for 5 seconds, repeats over and over

**B (3 times)** – alternates on and off somewhat fast (like a turn signal)

**B (4 times)** – flashes on/off/on/off then pauses, flashes on/off/on/off then pauses, repeats over and over

**B (5 times)** – flashes on then off and repeats, slower flash than B 3 times

**B (6 times)** – starts flashing on and off fast then slows down, repeats

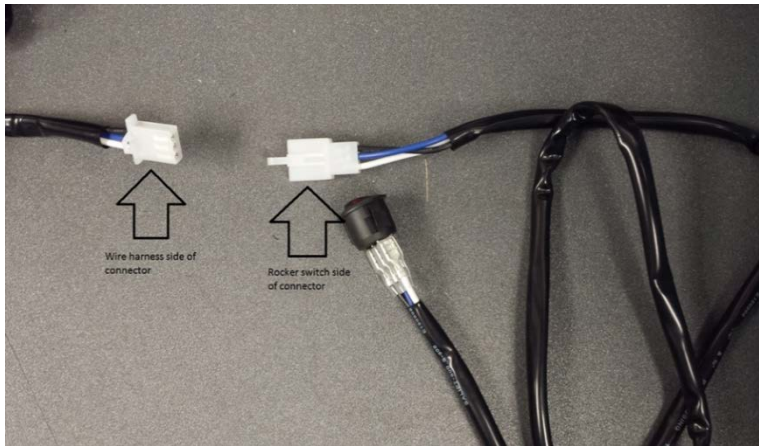
**B (7 times)** - starts flashing on and off slow then speeds up, repeats

**B (8 times)** – flashes one time fast then pauses, flashes two times fast then pauses, flashes 3 times fast then pauses...etc...

**C** – Each push goes in reverse order as B

**D** – S.O.S. flash pattern

Connection of the HE-WRC is simple; using the HEISE HE-DLWH1, HE-SLWH1, or the HE-SLWH2 wiring harness, disconnect the on/off rocker switch at the white 3 pin connector:



Now plug the HE-WRC receiver box into the white 3 pin connectors of the rocker switch side and the wire harness side. Now you have successfully added wireless control capability to your HEISE lighting. Now secure the HE-WRC receiver box either by screws or wire ties.

## **Remote Control Programming**

The remote already comes programmed to the receiver box however there may be a time where you need to replace the remote or there are two receiver boxes that you want to control with one remote or even using two HE-WRC's and the remotes interfere with each other and you want to separate them. Follow the steps below to program or delete a remote:

### **To Program a remote:**

1. Start by having the HE-WRC connected to the HEISE wire harness and connected to lights.
2. Push the Reset button on the top of the receiver unit till the LED lights/cubes flash twice (it will be immediate).



3. Now push any button on the wireless remote within 5 seconds and the LED lights/cubes will flash 3 times to indicate the remote is programmed.

#### **To clear remotes:**

1. Start by having the HE-WRC connected to the HEISE wire harness and connected to lights.
2. Push and hold the Reset button on the top of the receiver unit till the lights flash 5 times.
3. The remotes are now cleared from the memory and no remotes will work. You must now program a remote in order for the HE-WRC to operate properly.

#### **Wire colors for HE-WRC:**

Female pin side, this side plugs into the rocker switch:

**Blue** - 12 volt output to illuminate the switch      **Black** - Ground  
**White** – 12 volt power

Male pin side, this side plugs into the harness going to the relay:

**Blue** – 12 volt output to relay      **Black** – Ground  
**White** - 12 volt power

**1-800-221-0932**

**www.HeiseLED.com**

**460 Walker Street, Holly Hill, FL 32117**