

Part Applications

- Harley Davidson FLHT, FLHTCU, FLHTCUL, FLHX, FLHXS, FLTRX, FLTRXS, FLTRXSE (w/ lower fairings) 2014-2022 (†)

(†) Twin-Cooled® models

(†) FLHX models require purchase of lower fairing kit

Part Components

A) Speaker enclosure (L & R), with grille



B) Infinity Kappa Perfect 6.5" Speakers



C) HM-9722 harness (not Shown)

C

Harley-Davidson® 2014-2022 Lower Fairing Audio Upgrade Kit

Visit [MetraPowerSports.com](https://www.MetraPowerSports.com) for more detailed information about the product and up-to-date vehicle specific applications.

Note: This Installation will reuse hardware from the existing mounted lower fairing.

Note: Not compatible with the Rockford Fosgate OE system.

Product Features

- Sound-optimized enclosure for improved bass performance
- Molded tray fits snugly into lower fairings
- OE Fit and finish
- Painted a complimentary Matte Black finish

TABLE OF CONTENTS

Preparation.....	2
Fairing Disassembly.....	2-4
Installation.....	5-6
Notes and support.....	7-8

TOOLS & INSTALLATION ACCESSORIES REQUIRED

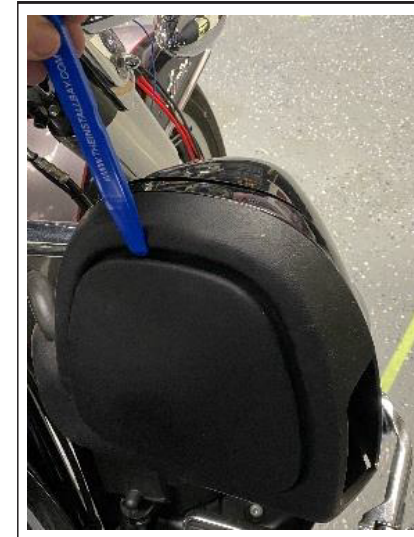
- Torx® Drivers T-25
- Phillips screwdriver
- Socket wrenches, 11mm.
- Blue Thread-locker

Attention! We recommend removing the main battery fuse prior to installation. When testing the after-market equipment, ensure that all factory equipment is connected before cycling the key to ignition.

FAIRING DISASSEMBLY

Attention! To prevent accidental vehicle start-up, which could cause death or serious injury, remove main fuse before proceeding.

1. Using a plastic trim prying tool, insert the tool into gap of the cover of lower fairing pod.
(Figure A)



(Figure A)

2. With an 11mm socket, and 6" extension, remove the retaining nut. Then pull the beauty panel away from the lower fairing.
(Figure B)



(Figure B)

Continue to disassembly

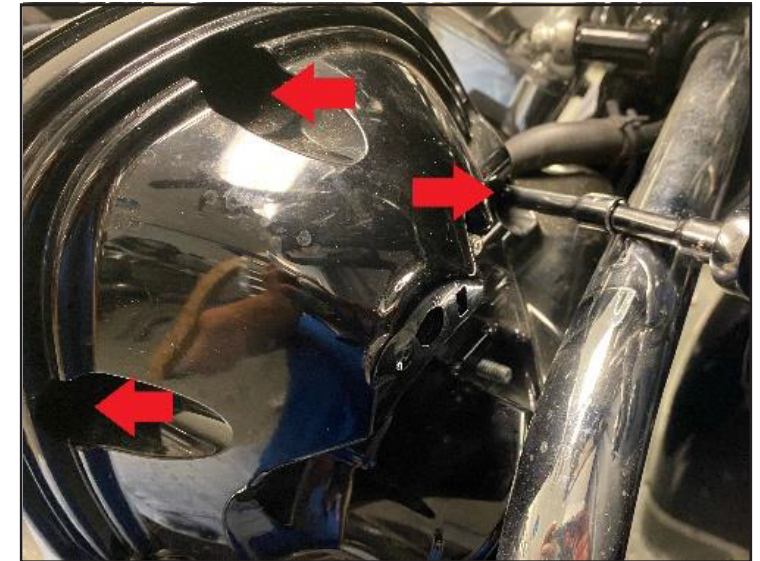
FAIRING DISASSEMBLY

1. From the front, remove the (2) 11mm bolts from tab holding the fairing to the crash bar. (Figure A)



(Figure A)

2. Using gentle pressure, push the hosing to the rear of the motorcycle. Remove (3) three, 11mm bolts from the guard. (Figure B)



(Figure B)

Continued on next page

FAIRING DISASSEMBLY

1. Locate the vent adjuster, using a T25 remove the lever and bolt from assembly. (Figure A)
2. Remove the OE clips from the OE fairing cover and transfer them to the speaker pod.



(Figure A)



(Figure B)

Continue to installation

INSTALLATION

Speaker Enclosure / Tray

1. Place speaker pod onto lower fairing, apply thread locker to the threads of the (3) screws then install the screws and tighten to 7.3–8.4 N·m (65–75 in-lbs).
(Figure A)
2. Pushing lower back to the crash bar, install the bolts and strap holding fairing to the crash bar.
3. Mark the location to drill the hole. Cover the drill point with masking tape to prevent cracking or chipping of the paint. Drill a 9.5 mm ($\frac{3}{8}$ in) hole in the glove box inboard side wall.
(Figure B.2)
*Optional: Insert a rubber grommet to protect the HM-9722 wires.
4. Route the speaker wires through the hole in the lower fairing.
5. Route the wiring harness under the fairing up to the radio and connect to the Kappa Perfect KP5004 amp. Connect the black Front channel Molex connector from the KP5004 (amp #2) to the HM-9722 harness. Make sure the White Molex connections from channels 5 & 6 of the DSP/Interface is plugged into the Front input channels of the amp.
6. Secure wire harness and verify wiring does not interfere with steering or suspension travel.
7. Using the hardware supplied with the speakers, apply thread locker to screws and mount the speaker to the lower fairing speaker pod.



next page *(Figure A)*

Finish install images



INSTALLATION NOTES



INSTALLATION

INFKPNTCKIT

INSTALLATION INSTRUCTIONS

#MetraPowerSports



NOTE:

To prevent possible damage to the sound system, verify that the ignition key switch is in the OFF position before installing the main fuse.

1. See the service manual and install the main fuse.
2. Test the sound system for proper operation.
3. See the service manual. Install the outer fairing and windshield.

WARNING:

- Be sure that steering is smooth and free without interference
- Interference with steering could result in loss of vehicle control and death or serious injury
- Be sure that wires, harnesses or lines do not pull tight when handlebars are turned fully to left or right fork stops
- Verify that steering is smooth and clear from stop to stop

NOTE:

If objectionable vibration occurs due to high levels of bass response, additional foam may be inserted between block-off panels and fairing lowers.

Having difficulties? We're here to help.



Contact our Tech Support line at:

386-257-1187



Or via email at:

techsupport@metra-autosound.com

Tech Support Hours (Eastern Standard Time)

Monday - Friday: 9:00 AM - 7:00 PM

Saturday: 10:00 AM - 5:00 PM

Sunday: 10:00 AM - 4:00 PM



KNOWLEDGE IS POWER

Enhance your installation and fabrication skills by enrolling in the most recognized and respected mobile electronics school in our industry. Log onto www.installerinstitute.com or call 800-354-6782 for more information and take steps toward a better tomorrow.



Metra Recommends MECP certified technicians