



INSTALLATION INSTRUCTIONS FOR PART 99-8224

APPLICATIONS

Toyota Matrix 2009 -10 Pontiac Vibe 2009 -10

(Excluding factory navigation models)

99-8224

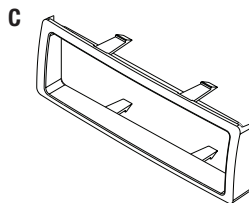
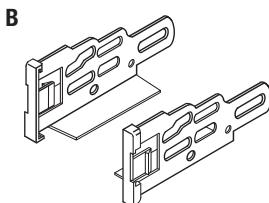
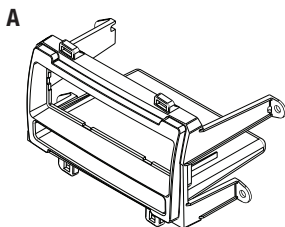


KIT FEATURES

- DIN radio provision with pocket
- ISO mount radio provision with pocket

KIT COMPONENTS

- A) Radio Housing
- B) ISO Bracket
- C) Trim Plate



WIRING & ANTENNA CONNECTIONS (Sold Separately)

Wiring Harness:

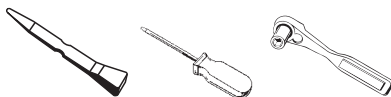
- 70-1761 Toyota harness 1987-up

Antenna Adapter:

- Not Required

TOOLS REQUIRED

Panel Removal Tool • Small Flat Blade Screwdriver • Socket Wrench



METRA. THE WORLD'S BEST KITS.™



1-800-221-0932



metraonline.com

© COPYRIGHT 2004-2011 METRA ELECTRONICS CORPORATION



99-8224

Table of Contents

Dash Disassembly

– Toyota Matrix 2009-10	3
– Pontiac Vibe 2009-10	3

Kit Assembly

– DIN radio provision with pocket	4
– ISO radio provision with pocket	5

Caution

Metra recommends disconnecting the negative battery terminal before beginning any installation. All accessories, switches, and especially air bag indicator lights must be plugged in before reconnecting the battery or cycling the ignition.

****NOTE: Refer also to the instructions included with the aftermarket radio.***



KNOWLEDGE IS POWER

Enhance your installation and fabrication skills by enrolling in the most recognized and respected mobile electronics school in our industry. Log onto www.installerinstitute.com or call 800-354-6782 for more information and take steps toward a better tomorrow.

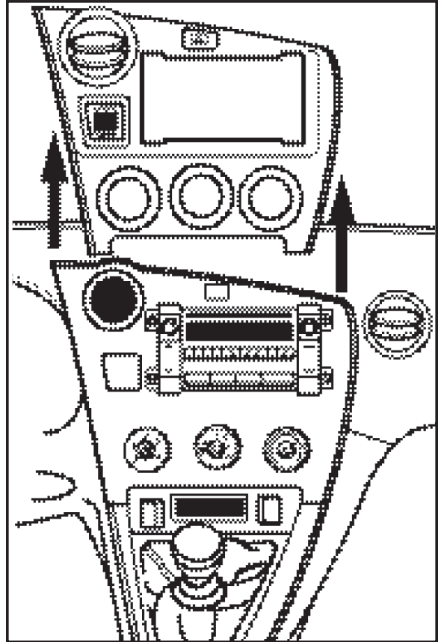


Metra recommends MECP certified technicians

Dash Disassembly

1. Unclip and remove the radio trim panel including the a/c vent. (Figure A)
2. Remove (4) 10 mm bolts securing the radio. Unplug and remove the radio.

Continue to kit assembly



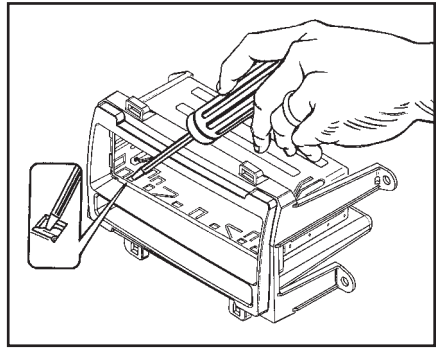
(Figure A)



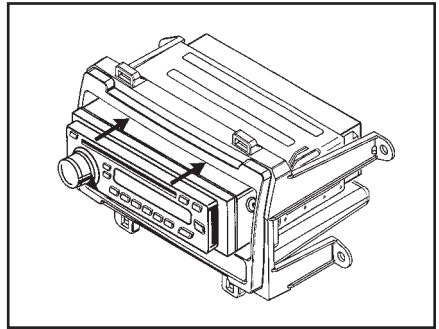
Kit Assembly 99-8224

DIN radio provision with pocket

1. Locate the factory wiring harness in the dash. Metra recommends using the proper mating adapter from Metra or AXXESS. Re-connect the negative battery terminal and test the unit for proper operation.
2. Slide the DIN cage into the radio housing and secure by bending the metal locking tabs outward. (Figure A)
3. Slide the aftermarket radio into the cage until it snaps into place. (Figure B)
4. Reassemble dash in reverse order of disassembly.



(Figure A)



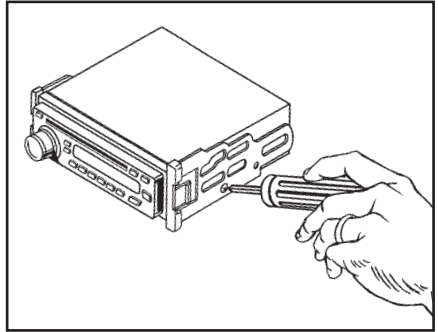
(Figure B)



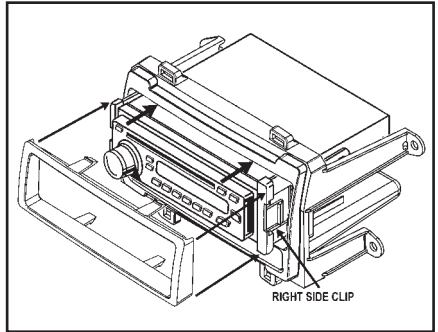
Kit Assembly 99-8224

ISO radio provision with pocket

1. Locate the factory wiring harness in the dash. Metra recommends using the proper mating adapter from Metra or AXXESS. Re-connect the negative battery terminal and test the unit for proper operation.
2. Mount the ISO brackets to the radio using the screws supplied with the radio. (Figure A)
3. Slide the radio into the radio housing until the side clips snap into place. (Figure B)
4. Snap the trim plate into the radio housing. (Figure B)
5. Reassemble dash in reverse order of disassembly.



(Figure A)



(Figure B)



INSTALLATION INSTRUCTIONS FOR PART 99-8224

REV. 5/20/11

METRA. THE WORLD'S BEST KITS.™



1-800-221-0932



metraonline.com

© COPYRIGHT 2004-2011 METRA ELECTRONICS CORPORATION