



## Ford/Chrysler Stop/Start Override Interface 2015-Up

### INTERFACE FEATURES

- Allows the override of the STOP/START engine feature
- The factory STOP/START button can resume the STOP/START feature
- Can be used with either a factory or aftermarket radio
- Vehicle type configured through the Axxess Updater software program
- Simple 4-wire installation

### APPLICATIONS

Chrysler		Ford		Jeep	
Pacifica	2017	Edge	2015-Up	Cherokee	2016-Up
		Escape	2017-Up	Gladiator	2020-Up
<b>Dodge</b>		F-150	2015-Up	Grand Cherokee	2015-Up
Durango	2016-Up	Focus	2016-Up	Wrangler	2019-Up
		Fusion	2015-Up		

### TABLE OF CONTENTS

Introduction.....	2
Programming.....	3
Connections.....	4-6
Operation.....	7

### INTERFACE COMPONENTS

- AXSSO interface
- AXSSO harness

### TOOLS & INSTALLATION ACCESSORIES REQUIRED

- Crimping tool and connectors, or solder gun, solder, and heat shrink • Tape • Wire cutter • Zip ties
- Micro-B USB cable  
(Axxess part number **AXUSB-MCBL**)

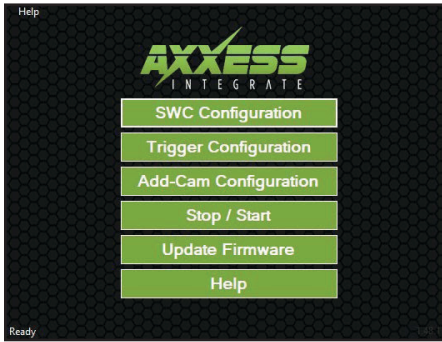
### Product Info



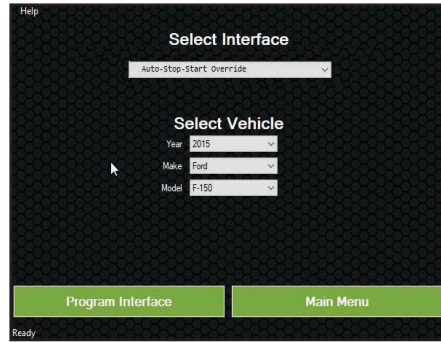
## INTRODUCTION

The AXSSO is designed to disengage the STOP/START feature of the vehicle, and keep that feature disengaged even after the key has been cycled. The AXSSO will work with either an aftermarket radio, or a factory radio. A simple 4-wire installation is all that is required to install the device in the vehicle, and programming through a Windows 10 computer via the [Axxess Updater](#) software program.

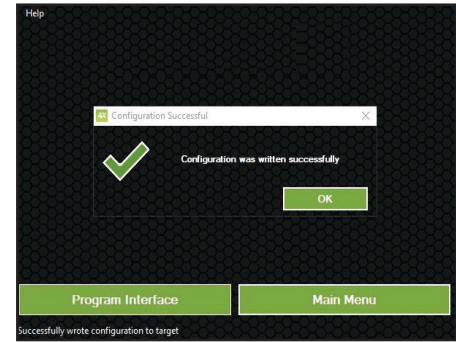
# PROGRAMMING



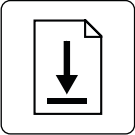
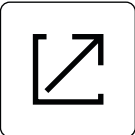
(Figure A)

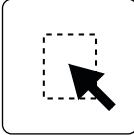



(Figure B)



(Figure C)

-  Download and install the Axxess Updater software program from: [axcessinterfaces.com/resources/updater-software](http://axcessinterfaces.com/resources/updater-software)
-  Connect the micro-B USB cable (sold separately) to the computer and AXSSO interface. Open the **Axxess Updater** software program and wait until the word **Ready** is shown in the bottom left of the screen. Select **Stop / Start**. (Figure A)

-  On the next screen that opens, select the year, make, and model of the vehicle, then press **Program Interface**. (Figure B)
-  When the **Configuration Successful** box pops up, the programming process is complete. (Figure C)

*Continue to Installation*

# CONNECTIONS

These vehicles will connect to the wiring harness located at the radio location. Reference the pin cavity from the front of the connector, then trace that pin to the wire behind the connector. As an alternate Plug n™ Play solution, use Metra part number AXSSO-CH instead, which will include a wiring harness and interface.

## Chrysler

Pacifica 2017

- Disassembly instructions: [metraonline.com/part/99-6543HG](http://metraonline.com/part/99-6543HG)

## Dodge

Durango 2016-Up

- Disassembly instructions: [metraonline.com/part/99-6537B](http://metraonline.com/part/99-6537B)

## Jeep

Cherokee 2016-Up

- Disassembly instructions: [metraonline.com/part/99-6518B](http://metraonline.com/part/99-6518B)

Gladiator 2019-Up

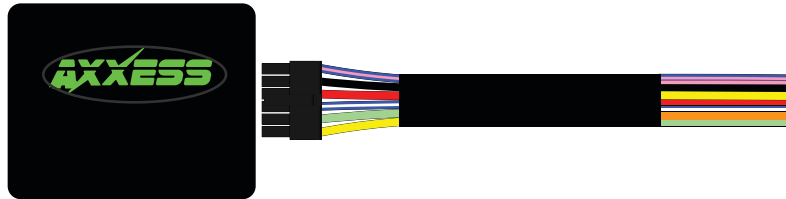
- Disassembly instructions: N/A

Grand Cherokee 2015-Up

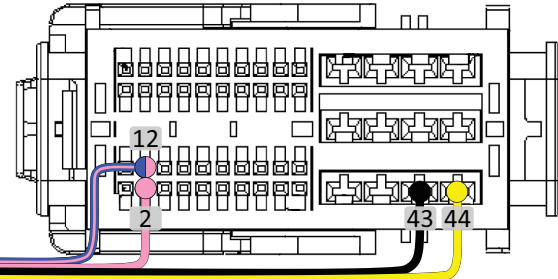
- Disassembly instructions: [metraonline.com/part/99-6536S](http://metraonline.com/part/99-6536S)

Wrangler 2019-Up

- Disassembly instructions: N/A



Radio Connector (pin view)



This is the view of the factory connector behind the radio, looking at the front of the connector (**pin view**) after it has been unplugged from the radio.

### From the AXSSO harness to the wiring harness in the vehicle behind the radio:

1. Connect the **Black** wire to **Pin-43**.
2. Connect the **Yellow** wire to **Pin-44**.
3. Connect the **Pink** wire to **Pin-2**.
4. Connect the **Blue/Pink** wire to **Pin-12**.
5. Any remaining wires tape off and disregard.

## CONNECTIONS (CONT.)

These vehicles will connect to the wiring harness located at the climate control location. Reference the pin cavity from the front of the connector, then trace that pin to the wire behind the connector. As an alternate Plug n' Play solution, use Metra part number AXSSO-FD instead, which will include a wiring harness and interface.

### Ford

F-150 2015-Up

- Disassembly instructions: [metraonline.com/part/99-5834CH](http://metraonline.com/part/99-5834CH)

Fusion 2015-Up

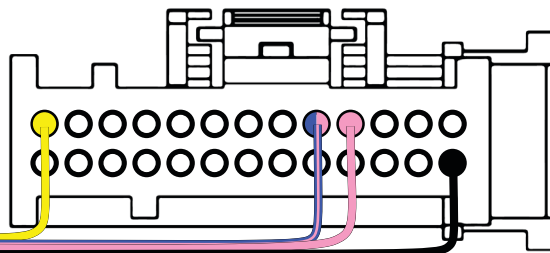
- Disassembly instructions: [metraonline.com/part/99-5841B](http://metraonline.com/part/99-5841B)

Edge 2015-Up

- Disassembly instructions: [metraonline.com/part/99-5851CH](http://metraonline.com/part/99-5851CH)



Climate Control Connector (pin view)



This is the view of the factory connector behind the climate control, looking at the front of the connector (**pin view**) after it has been unplugged from the radio.

### From the AXSSO harness to the wiring harness in the vehicle behind the climate control:

1. Connect the **Black** wire to **Pin-1**.
2. Connect the **Yellow** wire to **Pin-26**.
3. Connect the **Pink** wire to **Pin-17**.
4. Connect the **Blue/Pink** wire to **Pin-18**.
5. Any remaining wires tape off and disregard.

## CONNECTIONS (CONT.)

These vehicles will connect at the wiring harness located behind the OBD2 connector under the driver's side dashboard. Reference the pin cavity from the front of the connector, then trace that pin to the wire behind the connector. As an alternate Plug n' Play solution, use Metra part number AXSSO-FD instead, which will include an interface, wiring harness, and OBD2 connector.

### Ford

Focus 2016-Up  
Escape 2017-Up



### From the AXSSO harness to the wiring harness at the OBD connector:

1. Connect the **Black** wire to **Pin-1**.
2. Connect the **Yellow** wire to **Pin-16**.
3. Connect the **Pink** wire to **Pin-6**.
4. Connect the **Blue/Pink** wire to **Pin-14**.
5. Any remaining wires tape off and disregard.

## Re-engaging the STOP/START feature

1. Press the factory STOP/START button to re-engage the STOP/START feature.



Having difficulties? We're here to help.



Contact our Tech Support line at:

**386-257-1187**



Or via email at:

[techsupport@metra-autosound.com](mailto:techsupport@metra-autosound.com)

### **Tech Support Hours (Eastern Standard Time)**

Monday - Friday: 9:00 AM - 7:00 PM

Saturday: 10:00 AM - 7:00 PM

Sunday: 10:00 AM - 4:00 PM



### **KNOWLEDGE IS POWER**

Enhance your installation and fabrication skills by enrolling in the most recognized and respected mobile electronics school in our industry. Log onto [www.installerinstitute.edu](http://www.installerinstitute.edu) or call 386-672-5771 for more information and take steps toward a better tomorrow.



**Metra recommends MECP  
certified technicians**